

Lower Thames Crossing  
6.2 Environmental Statement  
Figure 7.19 - Photomontages  
Winter Year 1 and Summer  
Year 15 (1 of 4)  
(Tracked changes version)

APFP Regulation 5(2)(a)

Infrastructure Planning (Applications:  
Prescribed Forms and Procedure)  
Regulations 2009

Volume 6

DATE: August 2023  
DEADLINE: 3

Deleted: October 2022

Planning Inspectorate Scheme Ref: TR010032  
Application Document Ref: TR010032/APP/6.2

VERSION: 2.0

Deleted: 1

**Revision History**

<b><u>Version</u></b>	<b><u>Date</u></b>	<b><u>Submitted at</u></b>
<u>1.0</u>	<u>31 October 2022</u>	<u>DCO Application</u>
<u>2.0</u>	<u>24 August 2023</u>	<u>Deadline 3</u>

# Lower Thames Crossing

## 6.2 Environmental Statement

### Figure 7.19 - Photomontages Winter Year 1 and Summer Year 15 (1 of 4) (Tracked changes version)

#### List of contents

	Page number
<b>1 Photomontages</b> .....	<b>1</b>
1.1 Introduction.....	1
1.2 Schedule of Representative Viewpoints included in this application document	1

# 1 Photomontages

## 1.1 Introduction

1.1.1 For each Representative Viewpoint, the following photography and photomontage views have been provided:

- a. Baseline photography – Winter
- b. Corresponding photomontage – Year 1 (opening year)
- c. Baseline photography – Summer
- d. Corresponding photomontage – Year 15 (design year)

## 1.2 Schedule of Representative Viewpoints included in this application document

1.1.2 Baseline photography and photomontages have been included for the following Representative Viewpoints within this part of Figure 7.19:

### Part One of Figure 7.19: South of the River Thames

- a. S-05a - View from the Kent Downs AONB on Park Pale overbridge
- b. S-12 - View from the Kent Downs AONB on Brewers Road
- c. S-13 - View from the Kent Downs AONB on Brewers Road overbridge
- d. S-14 - View from the Kent Downs AONB on Brewers Road overbridge
- e. S-17 - View from the Kent Downs AONB on Thong Lane
- f. S-18 - View from the Kent Downs AONB on the HS1 green bridge
- g. S-20a - View from Jeskyns Community Woodland
- h. S-22 - View from Watling Street on the A2 overbridge



P01	S8	05/08/2022	First Issued	BB	HP	SK
Rev	Status	Rev. Date	Purpose of revision	Drawn	Chck'd	Apprv'd

For location see Figure 7.16 - Visual Effects Drawing with Representative Viewpoint and Photomontage Locations		<b>Winter Viewpoint:</b> Date and Time:	S-05a 03/12/2019 13:28	Visualisation Type:	Type 3	FL, Max Aperture:	50mm, 1.75	Distance to Order Limits:	0m
Camera:	Canon EOS 6D MkII	Projection Type:	Cylindrical	Tripod Height:	1.94m	View Direction:	(Centre of View)	View Direction:	W
Lens:	Canon EF 50mm f/1.8 STM	Enlargement Factor:	1.5	Viewpoint Ground Height:	84.2m AOD	Viewpoint Grid Reference:	569461E, 169552N	GPS Accuracy:	5m
Equipment:	Manfrotto MA 454 Micro Positioning Plate Manfrotto SBH-100 Ball Head	Horizontal FOV:	56.5°						

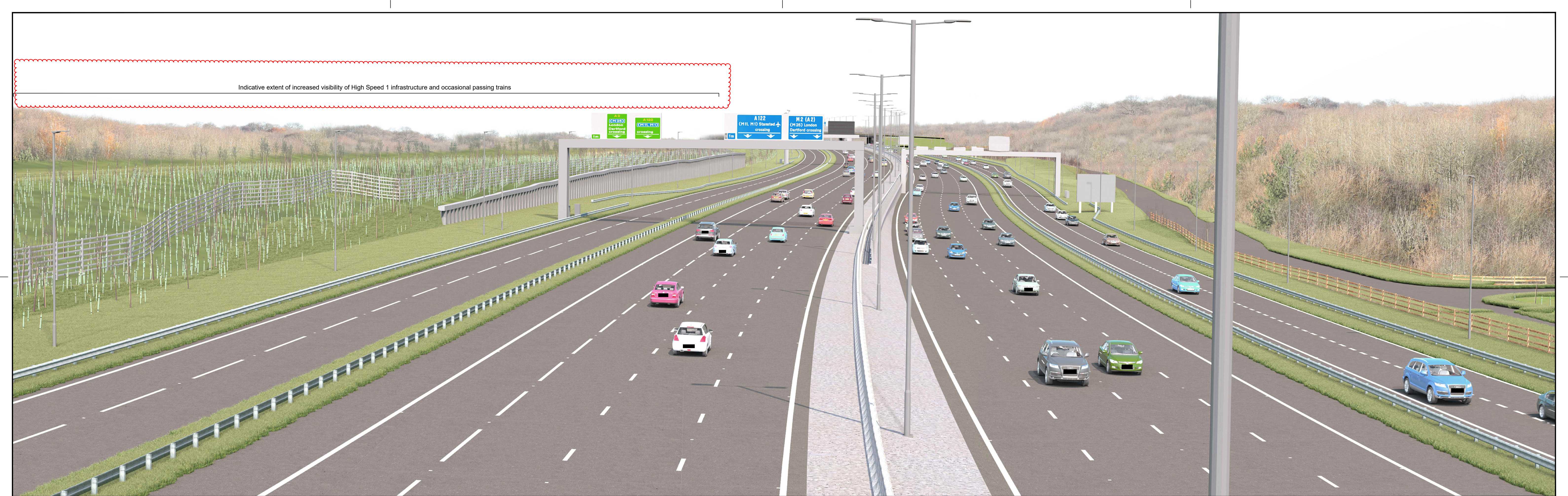


**LOWER THAMES CROSSING**  
5th Floor Beaufort House  
15 St Botolph Street  
London EC3A 7DT

Project	LOWER THAMES CROSSING
Drawing title	Figure 7.19 Baseline Photography - Viewpoint S-05a Winter Year 1 Sheet 1 of 2

Drawn	BB	Date - 05/08/2022	Status	S8	Revision	P01
Checked	HP	Date - 05/08/2022	Application Document No.	TR010032/APP/6.2		
Approved	SK	Date - 05/08/2022	Drawing number	HE540039-CJV-ELS-SZP_ZZ000000_Z-DR-LV-00287A		

Indicative extent of increased visibility of High Speed 1 infrastructure and occasional passing trains



P02	S9	07/08/2023	Deadline 3	BB	HP	SK
P01	S8	05/08/2022	First Issued	BB	HP	SK
Rev	Status	Rev. Date	Purpose of revision	Drawn	Chck'd	Apprv'd

For location see Figure 7.16 - Visual Effects Drawing with Representative Viewpoint and Photomontage Locations

**Winter Viewpoint:** S-05a  
 Date and Time: 03/12/2019 13:28

Visualisation Type: Type 3  
 Projection Type: Cylindrical  
 Enlargement Factor: 1.5  
 Horizontal FOV: 56.5°

FL, Max Aperture: 50mm, 1.75  
 Tripod Height: 1.94m  
 Viewpoint Ground Height: 84.2m AOD  
 Viewpoint Grid Reference: 569461E, 169552N

Distance to Order Limits: 0m  
 View Direction (Centre of View): W  
 GPS Accuracy: 5m



**Client**  
**LOWER THAMES CROSSING**  
 5th Floor Beaufort House  
 15 St Botolph Street  
 London EC3A 7DT

**Project**  
 LOWER THAMES CROSSING

**Drawing title**  
 Figure 7.19  
 Photomontage - Viewpoint S-05a  
 Winter Year 1  
 Sheet 1 of 2

Drawn	BB	Date - 07/08/2023	Status	Revision
Checked	HP	Date - 07/08/2023	<b>S9</b>	P02
Approved	SK	Date - 07/08/2023	Application Document No. TR010032/APP/6.2	
Drawing number <b>HE540039-CJV-ELS-SZP_ZZ000000_Z-DR-LV-00287</b>				



Rev	Status	Rev. Date	Purpose of revision	Drawn	Chck'd	Apprv'd
P01	S8	05/08/2022	First Issued	BB	HP	SK

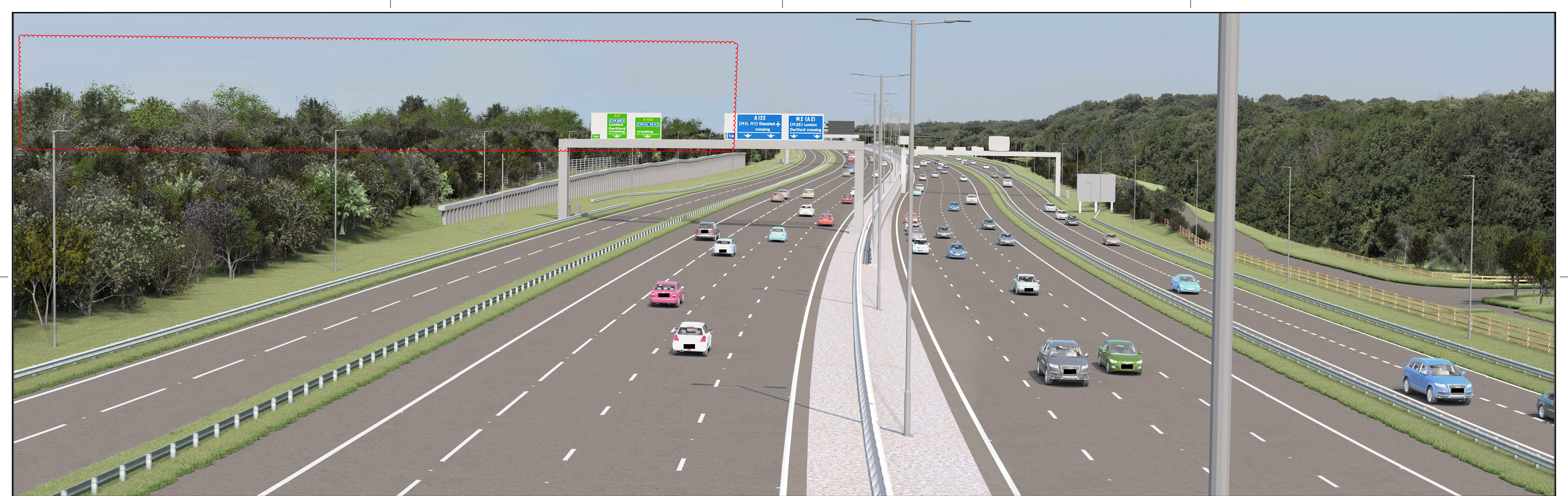
For location see Figure 7.16 - Visual Effects Drawing with Representative Viewpoint and Photomontage Locations		<b>Summer Viewpoint:</b>	S-05a				
		Date and Time:	25/07/2019 10:58				
Camera:	Canon EOS 6D MkII	Visualisation Type:	Type 3	FL, Max Aperture:	50mm, 1.75	Distance to Order Limits:	0m
Lens:	Canon EF 50mm f/1.8 STM	Projection Type:	Cylindrical	Tripod Height:	1.94m	View Direction	(Centre of View): W
Equipment:	Manfrotto MA 454 Micro Positioning Plate	Enlargement Factor:	1.5	Viewpoint Ground Height:	84.2m AOD	GPS Accuracy:	5m
	Manfrotto SBH-100 Ball Head	Horizontal FOV:	56.5°	Viewpoint Grid Reference:	569461E, 169552N		



**LOWER THAMES CROSSING**  
 5th Floor Beaufort House  
 15 St Botolph Street  
 London EC3A 7DT

Client	LOWER THAMES CROSSING
Project	LOWER THAMES CROSSING
Drawing title	Figure 7.19 Baseline Photography - Viewpoint S-05a Summer Year 15 Sheet 2 of 2

Drawn	BB	Date	- 05/08/2022	Status	S8	Revision	P01
Checked	HP	Date	- 05/08/2022				
Approved	SK	Date	- 05/08/2022	Application Document No. TR010032/APP/6.2			
Drawing number				HE540039-CJV-ELS-SZP_ZZ000000_Z-DR-LV-00288A			



P02	S9	07/08/2023	Deadline 3	BB	HP	SK
P01	S8	05/08/2022	First Issued	BB	HP	SK
Rev	Status	Rev. Date	Purpose of revision	Drawn	Chck'd	Apprv'd

For location see Figure 7.16 - Visual Effects Drawing with Representative Viewpoint and Photomontage Locations

Camera: Canon EOS 6D MkII  
 Lens: Canon EF 50mm f/1.8 STM  
 Equipment: Manfrotto MA 454 Micro Positioning Plate  
 Manfrotto SBH-100 Ball Head

**Summer Viewpoint:**  
 Date and Time: S-05a  
 25/07/2019 10:58

Visualisation Type: Type 3  
 Projection Type: Cylindrical  
 Enlargement Factor: 1.5  
 Horizontal FOV: 56.5°

FL, Max Aperture: 50mm, 1.75  
 Tripod Height: 1.94m  
 Viewpoint Ground Height: 84.2m AOD  
 Viewpoint Grid Reference: 569461E, 169552N

Distance to Order Limits: 0m  
 View Direction (Centre of View): W  
 GPS Accuracy: 5m



**Client**  
**LOWER THAMES CROSSING**  
 5th Floor Beaufort House  
 15 St Botolph Street  
 London EC3A 7DT

**Project**  
 LOWER THAMES CROSSING

**Drawing title**  
 Figure 7.19  
 Photomontage - Viewpoint S-05a  
 Summer Year 15  
 Sheet 2 of 2

Drawn	BB	Date - 07/08/2023	Status	Revision
Checked	HP	Date - 07/08/2023	S9	P02
Approved	SK	Date - 07/08/2023	Application Document No. TR010032/APP/6.2	
Drawing number HE540039-CJV-ELS-SZP_ZZ000000_Z-DR-LV-00288				





For location see Figure 7.16 - Visual Effects Drawing with Representative Viewpoint and Photomontage Locations

**Winter Viewpoint:**  
Date and Time: S-12  
05/03/2019 15:05

Camera: Canon EOS 6D MkII  
Lens: Canon EF 50mm f/1.8 STM  
Equipment: Manfrotto MA 454 Micro Positioning Plate  
Manfrotto SBH-100 Ball Head

Visualisation Type: Type 3  
Projection Type: Cylindrical  
Enlargement Factor: 1.5  
Horizontal FOV: 56.5°

FL, Max Aperture: 50mm, 1.75  
Tripod Height: 1.5m  
Viewpoint Ground Height: 109.6m AOD  
Viewpoint Grid Reference: 568324E, 169733N

Distance to Order Limits: 0m  
View Direction (Centre of View): SSW  
GPS Accuracy: 5m



**LOWER THAMES CROSSING**  
5th Floor Beaufort House  
15 St Botolph Street  
London EC3A 7DT

Project: LOWER THAMES CROSSING  
Drawing title: Figure 7.19  
Baseline Photography - Viewpoint S-12  
Winter Year 1  
Sheet 1 of 2

Drawn	BB	Date - 05/08/2022	Status	Revision
Checked	HP	Date - 05/08/2022	S8	P01
Approved	SK	Date - 05/08/2022	Application Document No. TR010032/APP/6.2	
Drawing number		HE540039-CJV-ELS-SZP_ZZ000000_Z-DR-LV-00289A		



P01	S8	05/08/2022	First Issued	BB	HP	SK
Rev	Status	Rev. Date	Purpose of revision	Drawn	Chck'd	Apprv'd

For location see Figure 7.16 - Visual Effects Drawing with Representative Viewpoint and Photomontage Locations		<b>Winter Viewpoint:</b>	S-12				
		Date and Time:	05/03/2019 15:05				
Camera:	Canon EOS 6D MkII	Visualisation Type:	Type 3	FL, Max Aperture:	50mm, 1.75	Distance to Order Limits:	0m
Lens:	Canon EF 50mm f/1.8 STM	Projection Type:	Cylindrical	Tripod Height:	1.5m	View Direction	(Centre of View): SSW
Equipment:	Manfrotto MA 454 Micro Positioning Plate	Enlargement Factor:	1.5	Viewpoint Ground Height:	109.6m AOD	GPS Accuracy:	5m
	Manfrotto SBH-100 Ball Head	Horizontal FOV:	56.5°	Viewpoint Grid Reference:	568324E, 169733N		



**Client**  
**LOWER THAMES CROSSING**  
 5th Floor Beaufort House  
 15 St Botolph Street  
 London EC3A 7DT

<b>Project</b>	LOWER THAMES CROSSING
<b>Drawing title</b>	Figure 7.19 Photomontage - Viewpoint S-12 Winter Year 1 Sheet 1 of 2

Drawn	BB	Date - 05/08/2022	Status	Revision
Checked	HP	Date - 05/08/2022	S8	P01
Approved	SK	Date - 05/08/2022	Application Document No. TR010032/APP/6.2	
Drawing number		HE540039-CJV-ELS-SZP_ZZ000000_Z-DR-LV-00289		



For location see Figure 7.16 - Visual Effects Drawing with Representative Viewpoint and Photomontage Locations

**Summer Viewpoint:** S-12  
Date and Time: 30/05/2019 10:07

Camera: Canon EOS 6D MkII  
Lens: Canon EF 50mm f/1.8 STM  
Equipment: Manfrotto MA 454 Micro Positioning Plate  
Manfrotto SBH-100 Ball Head

Visualisation Type: Type 3  
Projection Type: Cylindrical  
Enlargement Factor: 1.5  
Horizontal FOV: 56.5°

FL, Max Aperture: 50mm, 1.75  
Tripod Height: 1.5m  
Viewpoint Ground Height: 109.6m AOD  
Viewpoint Grid Reference: 568324E, 169733N

Distance to Order Limits: 0m  
View Direction (Centre of View): SSW  
GPS Accuracy: 5m



**LOWER THAMES CROSSING**  
5th Floor Beaufort House  
15 St Botolph Street  
London EC3A 7DT

Project: LOWER THAMES CROSSING  
Drawing title: Figure 7.19  
Baseline Photography - Viewpoint S-12  
Summer Year 15  
Sheet 2 of 2

Drawn	BB	Date - 05/08/2022	Status	Revision
Checked	HP	Date - 05/08/2022	S8	P01
Approved	SK	Date - 05/08/2022	Application Document No. TR010032/APP/6.2	
Drawing number		HE540039-CJV-ELS-SZP_ZZ000000_Z-DR-LV-00290A		



P01	S8	05/08/2022	First Issued	BB	HP	SK
Rev	Status	Rev. Date	Purpose of revision	Drawn	Chck'd	Apprv'd

For location see Figure 7.16 - Visual Effects Drawing with Representative Viewpoint and Photomontage Locations		<b>Summer Viewpoint:</b>	S-12				
		Date and Time:	30/05/2019 10:07				
Camera:	Canon EOS 6D MkII	Visualisation Type:	Type 3	FL, Max Aperture:	50mm, 1.75	Distance to Order Limits:	0m
Lens:	Canon EF 50mm f/1.8 STM	Projection Type:	Cylindrical	Tripod Height:	1.5m	View Direction	(Centre of View): SSW
Equipment:	Manfrotto MA 454 Micro Positioning Plate	Enlargement Factor:	1.5	Viewpoint Ground Height:	109.6m AOD	GPS Accuracy:	5m
	Manfrotto SBH-100 Ball Head	Horizontal FOV:	56.5°	Viewpoint Grid Reference:	568324E, 169733N		



**Client**  
**LOWER THAMES CROSSING**  
 5th Floor Beaufort House  
 15 St Botolph Street  
 London EC3A 7DT

**Project**  
 LOWER THAMES CROSSING  
**Drawing title**  
 Figure 7.19  
 Photomontage - Viewpoint S-12  
 Summer Year 15  
 Sheet 2 of 2

Drawn	BB	Date - 05/08/2022	Status	Revision
Checked	HP	Date - 05/08/2022	S8	P01
Approved	SK	Date - 05/08/2022	Application Document No. TR010032/APP/6.2	
Drawing number		HE540039-CJV-ELS-SZP_ZZ000000_Z-DR-LV-00290		



Rev	Status	Rev. Date	Purpose of revision	Drawn	Chck'd	Apprv'd
P01	S8	05/08/2022	First Issued	BB	HP	SK

For location see Figure 7.16 - Visual Effects Drawing with Representative Viewpoint and Photomontage Locations

Camera: Canon EOS 6D MkII  
 Lens: Canon EF 50mm f/1.8 STM  
 Equipment: Manfrotto MA 454 Micro Positioning Plate  
 Manfrotto SBH-100 Ball Head

**Winter Viewpoint:**  
 Date and Time: S-13  
 05/03/2019 15:48

Visualisation Type: Type 3  
 Projection Type: Cylindrical  
 Enlargement Factor: 1.5  
 Horizontal FOV: 56.5°

FL, Max Aperture: 50mm, 1.75  
 Tripod Height: 1.65m  
 Viewpoint Ground Height: 115.4m AOD  
 Viewpoint Grid Reference: 568282E, 169684N

Distance to Order Limits: 0m  
 View Direction (Centre of View): SSW  
 GPS Accuracy: 5m



**LOWER THAMES CROSSING**  
 5th Floor Beaufort House  
 15 St Botolph Street  
 London EC3A 7DT

Project: LOWER THAMES CROSSING  
 Drawing title: Figure 7.19  
 Baseline Photography - Viewpoint S-13  
 Winter Year 1  
 Sheet 1 of 4

Drawn	BB	Date - 05/08/2022	Status	Revision
Checked	HP	Date - 05/08/2022	S8	P01
Approved	SK	Date - 05/08/2022	Application Document No. TR010032/APP/6.2	
Drawing number HE540039-CJV-ELS-SZP_ZZ000000_Z-DR-LV-00291A				



P01	S8	05/08/2022	First Issued	BB	HP	SK
Rev	Status	Rev. Date	Purpose of revision	Drawn	Chck'd	Apprv'd

For location see Figure 7.16 - Visual Effects Drawing with Representative Viewpoint and Photomontage Locations

Camera: Canon EOS 6D MkII  
 Lens: Canon EF 50mm f/1.8 STM  
 Equipment: Manfrotto MA 454 Micro Positioning Plate  
 Manfrotto SBH-100 Ball Head

**Winter Viewpoint:**  
 Date and Time: S-13  
 05/03/2019 15:48

Visualisation Type: Type 3  
 Projection Type: Cylindrical  
 Enlargement Factor: 1.5  
 Horizontal FOV: 56.5°

FL, Max Aperture: 50mm, 1.75  
 Tripod Height: 1.65m  
 Viewpoint Ground Height: 115.4m AOD  
 Viewpoint Grid Reference: 568282E, 169684N

Distance to Order Limits: 0m  
 View Direction (Centre of View): SSW  
 GPS Accuracy: 5m

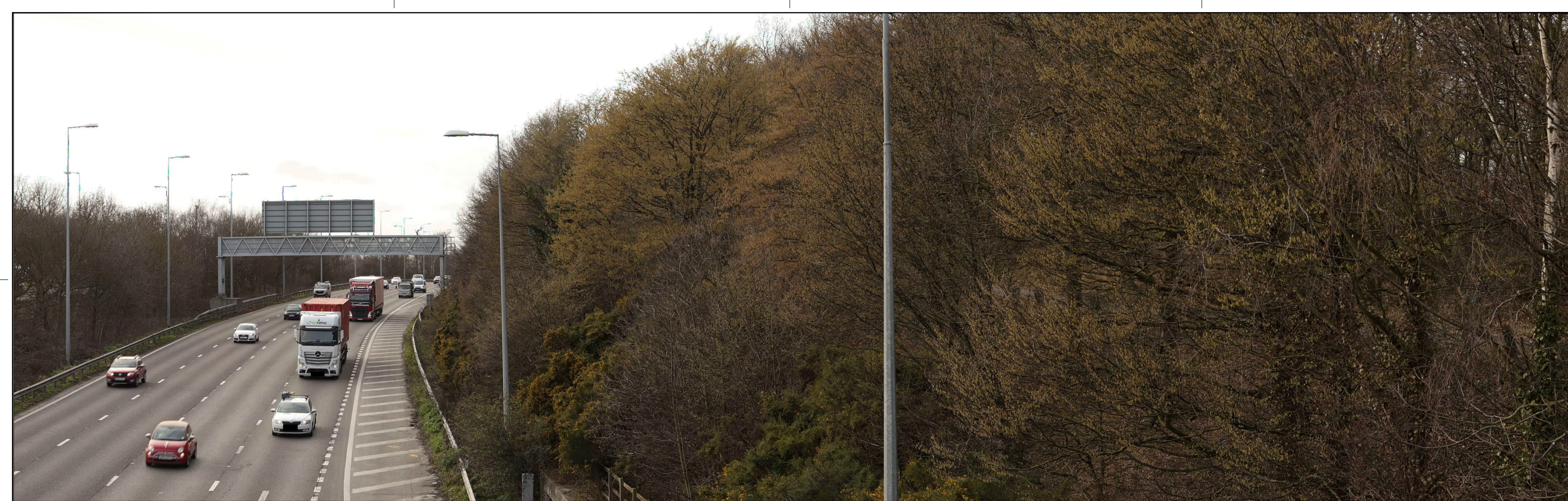


**Client**  
**LOWER THAMES CROSSING**  
 5th Floor Beaufort House  
 15 St Botolph Street  
 London EC3A 7DT

**Project**  
 LOWER THAMES CROSSING

**Drawing title**  
 Figure 7.19  
 Photomontage - Viewpoint S-13  
 Winter Year 1  
 Sheet 1 of 4

Drawn	BB	Date - 05/08/2022	Status	Revision
Checked	HP	Date - 05/08/2022	S8	P01
Approved	SK	Date - 05/08/2022	Application Document No. TR010032/APP/6.2	
Drawing number		HE540039-CJV-ELS-SZP_ZZ000000_Z-DR-LV-00291		



Rev	Status	Rev. Date	Purpose of revision	Drawn	Chck'd	Apprv'd
P01	S8	05/08/2022	First Issued	BB	HP	SK

For location see Figure 7.16 - Visual Effects Drawing with Representative Viewpoint and Photomontage Locations

Camera: Canon EOS 6D MkII  
 Lens: Canon EF 50mm f/1.8 STM  
 Equipment: Manfrotto MA 454 Micro Positioning Plate  
 Manfrotto SBH-100 Ball Head

**Winter Viewpoint:**  
 Date and Time: S-13  
 05/03/2019 15:48

Visualisation Type: Type 3  
 Projection Type: Cylindrical  
 Enlargement Factor: 1.5  
 Horizontal FOV: 56.5°

FL, Max Aperture: 50mm, 1.75  
 Tripod Height: 1.65m  
 Viewpoint Ground Height: 115.4m AOD  
 Viewpoint Grid Reference: 568282E, 169684N

Distance to Order Limits: 0m  
 View Direction (Centre of View): SSW  
 GPS Accuracy: 5m



**LOWER THAMES CROSSING**  
 5th Floor Beaufort House  
 15 St Botolph Street  
 London EC3A 7DT

Project: LOWER THAMES CROSSING  
 Drawing title: Figure 7.19  
 Baseline Photography - Viewpoint S-13  
 Winter Year 1  
 Sheet 2 of 4

Drawn	BB	Date - 05/08/2022	Status	Revision
Checked	HP	Date - 05/08/2022	S8	P01
Approved	SK	Date - 05/08/2022	Application Document No. TR010032/APP/6.2	
Drawing number HE540039-CJV-ELS-SZP_ZZ000000_Z-DR-LV-00292A				



For location see Figure 7.16 - Visual Effects Drawing with Representative Viewpoint and Photomontage Locations

**Winter Viewpoint:** S-13  
Date and Time: 05/03/2019 15:48

Camera: Canon EOS 6D MkII  
Lens: Canon EF 50mm f/1.8 STM  
Equipment: Manfrotto MA 454 Micro Positioning Plate  
Manfrotto SBH-100 Ball Head

Visualisation Type: Type 3  
Projection Type: Cylindrical  
Enlargement Factor: 1.5  
Horizontal FOV: 56.5°

FL, Max Aperture: 50mm, 1.75  
View Direction: 115.4m AOD  
Viewpoint Ground Height: 568282E, 169684N  
Viewpoint Grid Reference:

Distance to Order Limits: 0m  
(Centre of View): SSW  
GPS Accuracy: 5m



**LOWER THAMES CROSSING**  
5th Floor Beaufort House  
15 St Botolph Street  
London EC3A 7DT

Project: LOWER THAMES CROSSING  
Drawing title: Figure 7.19  
Photomontage - Viewpoint S-13  
Winter Year 1  
Sheet 2 of 4

Drawn	BB	Date - 05/08/2022	Status	Revision
Checked	HP	Date - 05/08/2022	S8	P01
Approved	SK	Date - 05/08/2022	Application Document No. TR010032/APP/6.2	
Drawing number		HE540039-CJV-ELS-SZP_ZZ000000_Z-DR-LV-00292		





P01	S8	05/08/2022	First Issued	BB	HP	SK
Rev	Status	Rev. Date	Purpose of revision	Drawn	Chck'd	Apprv'd

For location see Figure 7.16 - Visual Effects Drawing with Representative Viewpoint and Photomontage Locations

Camera: Canon EOS 6D MkII  
 Lens: Canon EF 50mm f/1.8 STM  
 Equipment: Manfrotto MA 454 Micro Positioning Plate  
 Manfrotto SBH-100 Ball Head

**Summer Viewpoint:**  
 Date and Time: S-13  
 30/05/2019 10:21

Visualisation Type: Type 3  
 Projection Type: Cylindrical  
 Enlargement Factor: 1.5  
 Horizontal FOV: 56.5°

FL, Max Aperture: 50mm, 1.75  
 Tripod Height: 1.65m  
 Viewpoint Ground Height: 115.4m AOD  
 Viewpoint Grid Reference: 568282E, 169684N

Distance to Order Limits: 0m  
 View Direction (Centre of View): SSW  
 GPS Accuracy: 5m



**LOWER THAMES CROSSING**  
 5th Floor Beaufort House  
 15 St Botolph Street  
 London EC3A 7DT

Project: LOWER THAMES CROSSING  
 Drawing title: Figure 7.19  
 Baseline Photography - Viewpoint S-13  
 Summer Year 15  
 Sheet 3 of 4

Drawn	BB	Date - 05/08/2022	Status	Revision
Checked	HP	Date - 05/08/2022	S8	P01
Approved	SK	Date - 05/08/2022	Application Document No. TR010032/APP/6.2	
Drawing number		HE540039-CJV-ELS-SZP_ZZ000000_Z-DR-LV-00293A		



Rev	Status	Rev. Date	Purpose of revision	Drawn	Chck'd	Apprv'd
P01	S8	05/08/2022	First Issued	BB	HP	SK

For location see Figure 7.16 - Visual Effects Drawing with Representative Viewpoint and Photomontage Locations		<b>Summer Viewpoint:</b>		S-13	
		Date and Time:		30/05/2019 10:21	
Camera:	Canon EOS 6D MkII	Visualisation Type:	Type 3	FL, Max Aperture:	50mm, 1.75
Lens:	Canon EF 50mm f/1.8 STM	Projection Type:	Cylindrical	Tripod Height:	1.65m
Equipment:	Manfrotto MA 454 Micro Positioning Plate	Enlargement Factor:	1.5	Viewpoint Ground Height:	115.4m AOD
	Manfrotto SBH-100 Ball Head	Horizontal FOV:	56.5°	Viewpoint Grid Reference:	568282E, 169684N
				Distance to Order Limits:	0m
				View Direction (Centre of View):	SSW
				GPS Accuracy:	5m



**LOWER THAMES CROSSING**  
 5th Floor Beaufort House  
 15 St Botolph Street  
 London EC3A 7DT

Project	LOWER THAMES CROSSING
Drawing title	Figure 7.19 Photomontage - Viewpoint S-13 Summer Year 15 Sheet 3 of 4

Drawn	BB	Date - 05/08/2022	Status	S8	Revision	P01
Checked	HP	Date - 05/08/2022	Application Document No. TR010032/APP/6.2			
Approved	SK	Date - 05/08/2022	Drawing number			
HE540039-CJV-ELS-SZP_ZZ000000_Z-DR-LV-00293						



P01	S8	05/08/2022	First Issued	BB	HP	SK
Rev	Status	Rev. Date	Purpose of revision	Drawn	Chck'd	Apprv'd

For location see Figure 7.16 - Visual Effects Drawing with Representative Viewpoint and Photomontage Locations

Camera: Canon EOS 6D MkII  
 Lens: Canon EF 50mm f/1.8 STM  
 Equipment: Manfrotto MA 454 Micro Positioning Plate  
 Manfrotto SBH-100 Ball Head

**Summer Viewpoint:** S-13  
 Date and Time: 30/05/2019 10:21

Visualisation Type: Type 3  
 Projection Type: Cylindrical  
 Enlargement Factor: 1.5  
 Horizontal FOV: 56.5°

FL, Max Aperture: 50mm, 1.75  
 Tripod Height: 1.65m  
 Viewpoint Ground Height: 115.4m AOD  
 Viewpoint Grid Reference: 568282E, 169684N

Distance to Order Limits: 0m  
 View Direction (Centre of View): SSW  
 GPS Accuracy: 5m



**LOWER THAMES CROSSING**  
 5th Floor Beaufort House  
 15 St Botolph Street  
 London EC3A 7DT

Project: LOWER THAMES CROSSING  
 Drawing title: Figure 7.19  
 Baseline Photography - Viewpoint S-13  
 Summer Year 15  
 Sheet 4 of 4

Drawn	BB	Date - 05/08/2022	Status	Revision
Checked	HP	Date - 05/08/2022	S8	P01
Approved	SK	Date - 05/08/2022	Application Document No. TR010032/APP/6.2	
Drawing number		HE540039-CJV-ELS-SZP_ZZ000000_Z-DR-LV-00294A		



P01	S8	05/08/2022	First Issued	BB	HP	SK
Rev	Status	Rev. Date	Purpose of revision	Drawn	Chck'd	Apprv'd

For location see Figure 7.16 - Visual Effects Drawing with Representative Viewpoint and Photomontage Locations		<b>Summer Viewpoint:</b>	S-13				
		Date and Time:	30/05/2019 10:21				
Camera:	Canon EOS 6D MkII	Visualisation Type:	Type 3	FL, Max Aperture:	50mm, 1.75	Distance to Order Limits:	0m
Lens:	Canon EF 50mm f/1.8 STM	Projection Type:	Cylindrical	View Height:	1.65m	View Direction:	SSW
Equipment:	Manfrotto MA 454 Micro Positioning Plate	Enlargement Factor:	1.5	Viewpoint Ground Height:	115.4m AOD	(Centre of View):	
	Manfrotto SBH-100 Ball Head	Horizontal FOV:	56.5°	Viewpoint Grid Reference:	568282E, 169684N	GPS Accuracy:	5m



**LOWER THAMES CROSSING**  
 5th Floor Beaufort House  
 15 St Botolph Street  
 London EC3A 7DT

Project	LOWER THAMES CROSSING
Drawing title	Figure 7.19 Photomontage - Viewpoint S-13 Summer Year 15 Sheet 4 of 4

Drawn	BB	Date - 05/08/2022	Status	S8	Revision	P01
Checked	HP	Date - 05/08/2022				
Approved	SK	Date - 05/08/2022	Application Document No. TR010032/APP/6.2			
Drawing number		HE540039-CJV-ELS-SZP_ZZ000000_Z-DR-LV-00294				



Rev	Status	Rev. Date	Purpose of revision	Drawn	Chck'd	Apprv'd
P01	S8	05/08/2022	First Issued	BB	HP	SK

For location see Figure 7.16 - Visual Effects Drawing with Representative Viewpoint and Photomontage Locations		<b>Winter Viewpoint:</b> Date and Time:	S-14 05/03/2019 15:17	<b>Visualisation Type:</b>	Type 3	<b>FL, Max Aperture:</b>	50mm, 1.75	<b>Distance to Order Limits:</b>	0m
<b>Camera:</b>	Canon EOS 6D MkII	<b>Projection Type:</b>	Cylindrical	<b>Tripod Height:</b>	1.5m	<b>View Direction:</b>	(Centre of View): NE	<b>Viewpoint Ground Height:</b>	111.3m AOD
<b>Lens:</b>	Canon EF 50mm f/1.8 STM	<b>Enlargement Factor:</b>	1.5	<b>Viewpoint Grid Reference:</b>	568232E, 169606N	<b>GPS Accuracy:</b>	5m		
<b>Equipment:</b>	Manfrotto MA 454 Micro Positioning Plate Manfrotto SBH-100 Ball Head	<b>Horizontal FOV:</b>	56.5°						

Client



**LOWER THAMES CROSSING**  
5th Floor Beaufort House  
15 St Botolph Street  
London EC3A 7DT

Project LOWER THAMES CROSSING  
Drawing title Figure 7.19  
Baseline Photography - Viewpoint S-14  
Winter Year 1  
Sheet 1 of 2

Drawn	BB	Date - 05/08/2022	Status	S8	Revision	P01
Checked	HP	Date - 05/08/2022	Application Document No. TR010032/APP/6.2			
Approved	SK	Date - 05/08/2022	Drawing number			
HE540039-CJV-ELS-SZP_ZZ000000_Z-DR-LV-00295A						



P01	S8	05/08/2022	First Issued	BB	HP	SK
Rev	Status	Rev. Date	Purpose of revision	Drawn	Chck'd	Apprv'd

For location see Figure 7.16 - Visual Effects Drawing with Representative Viewpoint and Photomontage Locations

Camera: Canon EOS 6D MkII  
 Lens: Canon EF 50mm f/1.8 STM  
 Equipment: Manfrotto MA 454 Micro Positioning Plate  
 Manfrotto SBH-100 Ball Head

**Winter Viewpoint:**  
 Date and Time: S-14  
 05/03/2019 15:17

Visualisation Type: Type 3  
 Projection Type: Cylindrical  
 Enlargement Factor: 1.5  
 Horizontal FOV: 56.5°

FL, Max Aperture: 50mm, 1.75  
 Tripod Height: 1.5m  
 Viewpoint Ground Height: 111.3m AOD  
 Viewpoint Grid Reference: 568232E, 169606N

Distance to Order Limits: 0m  
 View Direction (Centre of View): NE  
 GPS Accuracy: 5m



**LOWER THAMES CROSSING**  
 5th Floor Beaufort House  
 15 St Botolph Street  
 London EC3A 7DT

Project: LOWER THAMES CROSSING  
 Drawing title: Figure 7.19  
 Photomontage - Viewpoint S-14  
 Winter Year 1  
 Sheet 1 of 2

Drawn	BB	Date - 05/08/2022	Status	Revision
Checked	HP	Date - 05/08/2022	S8	P01
Approved	SK	Date - 05/08/2022	Application Document No. TR010032/APP/6.2	
Drawing number HE540039-CJV-ELS-SZP_ZZ000000_Z-DR-LV-00295				



P01	S8	05/08/2022	First Issued	BB	HP	SK
Rev	Status	Rev. Date	Purpose of revision	Drawn	Chck'd	Apprv'd

For location see Figure 7.16 - Visual Effects Drawing with Representative Viewpoint and Photomontage Locations		<b>Summer Viewpoint:</b>	S-14				
		Date and Time:	30/05/2019 10:37				
Camera:	Canon EOS 6D MkII	Visualisation Type:	Type 3	FL, Max Aperture:	50mm, 1.75	Distance to Order Limits:	0m
Lens:	Canon EF 50mm f/1.8 STM	Projection Type:	Cylindrical	Tripod Height:	1.5m	View Direction	NE
Equipment:	Manfrotto MA 454 Micro Positioning Plate	Enlargement Factor:	1.5	Viewpoint Ground Height:	111.3m AOD	(Centre of View):	NE
	Manfrotto SBH-100 Ball Head	Horizontal FOV:	56.5°	Viewpoint Grid Reference:	568232E, 169606N	GPS Accuracy:	5m



**LOWER THAMES CROSSING**  
 5th Floor Beaufort House  
 15 St Botolph Street  
 London EC3A 7DT

Project	LOWER THAMES CROSSING
Drawing title	Figure 7.19 Baseline Photography - Viewpoint S-14 Summer Year 15 Sheet 2 of 2

Drawn	BB	Date - 05/08/2022	Status	Revision
Checked	HP	Date - 05/08/2022	S8	P01
Approved	SK	Date - 05/08/2022	Application Document No. TR010032/APP/6.2	
Drawing number		HE540039-CJV-ELS-SZP_ZZ000000_Z-DR-LV-00296A		



For location see Figure 7.16 - Visual Effects Drawing with Representative Viewpoint and Photomontage Locations

**Summer Viewpoint:** S-14  
Date and Time: 30/05/2019 10:37

Camera: Canon EOS 6D MkII  
Lens: Canon EF 50mm f/1.8 STM  
Equipment: Manfrotto MA 454 Micro Positioning Plate  
Manfrotto SBH-100 Ball Head

Visualisation Type: Type 3  
Projection Type: Cylindrical  
Enlargement Factor: 1.5  
Horizontal FOV: 56.5°

FL, Max Aperture: 50mm, 1.75  
Tripod Height: 1.5m  
Viewpoint Ground Height: 111.3m AOD  
Viewpoint Grid Reference: 568232E, 169606N

Distance to Order Limits: 0m  
View Direction (Centre of View): NE  
GPS Accuracy: 5m



**LOWER THAMES CROSSING**  
5th Floor Beaufort House  
15 St Botolph Street  
London EC3A 7DT

Project: LOWER THAMES CROSSING  
Drawing title: Figure 7.19  
Photomontage - Viewpoint S-14  
Summer Year 15  
Sheet 2 of 2

Drawn	BB	Date - 05/08/2022	Status	Revision
Checked	HP	Date - 05/08/2022	S8	P01
Approved	SK	Date - 05/08/2022	Application Document No. TR010032/APP/6.2	
Drawing number		HE540039-CJV-ELS-SZP_ZZ000000_Z-DR-LV-00296		

P01	S8	05/08/2022	First Issued	BB	HP	SK
Rev	Status	Rev. Date	Purpose of revision	Drawn	Chck'd	Apprv'd





Rev	Status	Rev. Date	Purpose of revision	Drawn	Chck'd	Apprv'd
P01	S8	05/08/2022	First Issued	BB	HP	SK

For location see Figure 7.16 - Visual Effects Drawing with Representative Viewpoint and Photomontage Locations

Camera: Canon EOS 6D MkII  
 Lens: Canon EF 50mm f/1.8 STM  
 Equipment: Manfrotto MA 454 Micro Positioning Plate  
 Manfrotto SBH-100 Ball Head

**Winter Viewpoint:**  
 Date and Time: S-17  
 07/03/2019 12:09

Visualisation Type: Type 3  
 Projection Type: Cylindrical  
 Enlargement Factor: 1.5  
 Horizontal FOV: 56.5°

FL, Max Aperture: 50mm, 1.75  
 Tripod Height: 1.5m  
 Viewpoint Ground Height: 89.9m AOD  
 Viewpoint Grid Reference: 567389E, 169920N

Distance to Order Limits: 0m  
 View Direction (Centre of View): S  
 GPS Accuracy: 5m



**LOWER THAMES CROSSING**  
 5th Floor Beaufort House  
 15 St Botolph Street  
 London EC3A 7DT

Project: LOWER THAMES CROSSING  
 Drawing title: Figure 7.19  
 Baseline Photography - Viewpoint S-17  
 Winter Year 1  
 Sheet 1 of 4

Drawn	BB	Date - 05/08/2022	Status	Revision
Checked	HP	Date - 05/08/2022	S8	P01
Approved	SK	Date - 05/08/2022	Application Document No. TR010032/APP/6.2	
Drawing number HE540039-CJV-ELS-SZP_ZZ000000_Z-DR-LV-00297A				



P01	S8	05/08/2022	First Issued	BB	HP	SK
Rev	Status	Rev. Date	Purpose of revision	Drawn	Chck'd	Apprv'd

For location see Figure 7.16 - Visual Effects Drawing with Representative Viewpoint and Photomontage Locations

Camera: Canon EOS 6D MkII  
 Lens: Canon EF 50mm f/1.8 STM  
 Equipment: Manfrotto MA 454 Micro Positioning Plate  
 Manfrotto SBH-100 Ball Head

Visualisation Type: Type 3  
 Projection Type: Cylindrical  
 Enlargement Factor: 1.5  
 Horizontal FOV: 56.5°

Winter Viewpoint:  
 Date and Time: S-17  
 07/03/2019 12:09

FL, Max Aperture: 50mm, 1.75  
 Tripod Height: 1.5m  
 Viewpoint Ground Height: 89.9m AOD  
 Viewpoint Grid Reference: 567389E, 169920N

Distance to Order Limits: 0m  
 View Direction (Centre of View): S  
 GPS Accuracy: 5m



**LOWER THAMES CROSSING**  
 5th Floor Beaufort House  
 15 St Botolph Street  
 London EC3A 7DT

Project: LOWER THAMES CROSSING  
 Drawing title: Figure 7.19  
 Photomontage - Viewpoint S-17  
 Winter Year 1  
 Sheet 1 of 4

Drawn	BB	Date - 05/08/2022	Status	Revision
Checked	HP	Date - 05/08/2022	S8	P01
Approved	SK	Date - 05/08/2022	Application Document No. TR010032/APP/6.2	
Drawing number HE540039-CJV-ELS-SZP_ZZ000000_Z-DR-LV-00297				



P01	S8	05/08/2022	First Issued	BB	HP	SK
Rev	Status	Rev. Date	Purpose of revision	Drawn	Chck'd	Apprv'd

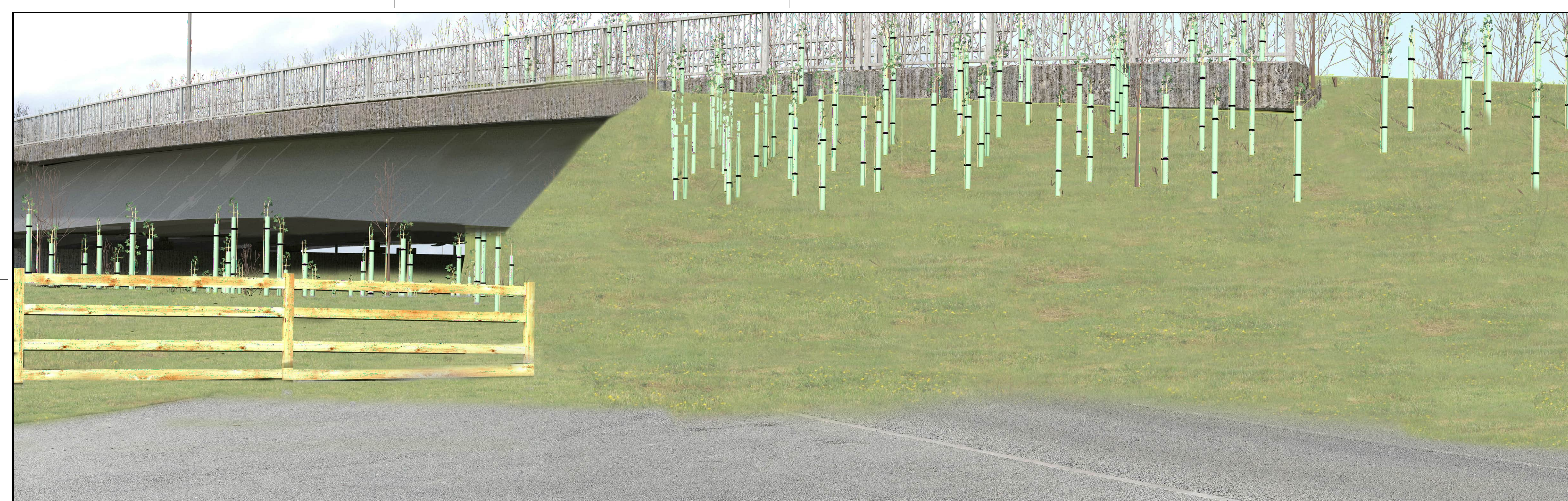
For location see Figure 7.16 - Visual Effects Drawing with Representative Viewpoint and Photomontage Locations		<b>Winter Viewpoint:</b>	S-17				
		Date and Time:	07/03/2019 12:09				
Camera:	Canon EOS 6D MkII	Visualisation Type:	Type 3	FL, Max Aperture:	50mm, 1.75	Distance to Order Limits:	0m
Lens:	Canon EF 50mm f/1.8 STM	Projection Type:	Cylindrical	Tripod Height:	1.5m	View Direction	(Centre of View): S
Equipment:	Manfrotto MA 454 Micro Positioning Plate	Enlargement Factor:	1.5	Viewpoint Ground Height:	89.9m AOD	GPS Accuracy:	5m
	Manfrotto SBH-100 Ball Head	Horizontal FOV:	56.5°	Viewpoint Grid Reference:	567389E, 169920N		



**LOWER THAMES CROSSING**  
 5th Floor Beaufort House  
 15 St Botolph Street  
 London EC3A 7DT

Project	LOWER THAMES CROSSING
Drawing title	Figure 7.19 Baseline Photography - Viewpoint S-17 Winter Year 1 Sheet 2 of 4

Drawn	BB	Date - 05/08/2022	Status	S8	Revision	P01
Checked	HP	Date - 05/08/2022				
Approved	SK	Date - 05/08/2022	Application Document No. TR010032/APP/6.2			
Drawing number		HE540039-CJV-ELS-SZP_ZZ000000_Z-DR-LV-00298A				



For location see Figure 7.16 - Visual Effects Drawing with Representative Viewpoint and Photomontage Locations

**Winter Viewpoint:**  
Date and Time: S-17  
07/03/2019 12:09

Camera: Canon EOS 6D MkII  
Lens: Canon EF 50mm f/1.8 STM  
Equipment: Manfrotto MA 454 Micro Positioning Plate  
Manfrotto SBH-100 Ball Head

Visualisation Type: Type 3  
Projection Type: Cylindrical  
Enlargement Factor: 1.5  
Horizontal FOV: 56.5°

FL, Max Aperture: 50mm, 1.75  
Tripod Height: 1.5m  
Viewpoint Ground Height: 89.9m AOD  
Viewpoint Grid Reference: 567389E, 169920N

Distance to Order Limits: 0m  
View Direction (Centre of View): S  
GPS Accuracy: 5m



**LOWER THAMES CROSSING**  
5th Floor Beaufort House  
15 St Botolph Street  
London EC3A 7DT

Project: LOWER THAMES CROSSING  
Drawing title: Figure 7.19  
Photomontage - Viewpoint S-17  
Winter Year 1  
Sheet 2 of 4

Drawn	BB	Date - 05/08/2022	Status	Revision
Checked	HP	Date - 05/08/2022	S8	P01
Approved	SK	Date - 05/08/2022	Application Document No. TR010032/APP/6.2	
Drawing number				
HE540039-CJV-ELS-SZP_ZZ000000_Z-DR-LV-00298				

P01	S8	05/08/2022	First Issued	BB	HP	SK
Rev	Status	Rev. Date	Purpose of revision	Drawn	Chck'd	Apprv'd



P01	S8	05/08/2022	First Issued	BB	HP	SK
Rev	Status	Rev. Date	Purpose of revision	Drawn	Chck'd	Apprv'd

For location see Figure 7.16 - Visual Effects Drawing with Representative Viewpoint and Photomontage Locations

Camera: Canon EOS 6D MkII  
 Lens: Canon EF 50mm f/1.8 STM  
 Equipment: Manfrotto MA 454 Micro Positioning Plate  
 Manfrotto SBH-100 Ball Head

**Summer Viewpoint:** S-17  
 Date and Time: 29/05/2019 16:44

Visualisation Type: Type 3  
 Projection Type: Cylindrical  
 Enlargement Factor: 1.5  
 Horizontal FOV: 56.5°

FL, Max Aperture: 50mm, 1.75  
 Tripod Height: 1.5m  
 Viewpoint Ground Height: 89.9m AOD  
 Viewpoint Grid Reference: 567389E, 169920N

Distance to Order Limits: 0m  
 View Direction (Centre of View): S  
 GPS Accuracy: 5m



**LOWER THAMES CROSSING**  
 5th Floor Beaufort House  
 15 St Botolph Street  
 London EC3A 7DT

Project: LOWER THAMES CROSSING  
 Drawing title: Figure 7.19  
 Baseline Photography - Viewpoint S-17  
 Summer Year 15  
 Sheet 3 of 4

Drawn	BB	Date - 05/08/2022	Status	S8	Revision	P01
Checked	HP	Date - 05/08/2022	Application Document No. TR010032/APP/6.2			
Approved	SK	Date - 05/08/2022	Drawing number			
HE540039-CJV-ELS-SZP_ZZ000000_Z-DR-LV-00299A			HE540039-CJV-ELS-SZP_ZZ000000_Z-DR-LV-00299A.dwg			



P01	S8	05/08/2022	First Issued	BB	HP	SK
Rev	Status	Rev. Date	Purpose of revision	Drawn	Chck'd	Apprv'd

For location see Figure 7.16 - Visual Effects Drawing with Representative Viewpoint and Photomontage Locations		<b>Summer Viewpoint:</b>	S-17				
		Date and Time:	29/05/2019 16:44				
Camera:	Canon EOS 6D MkII	Visualisation Type:	Type 3	FL, Max Aperture:	50mm, 1.75	Distance to Order Limits:	0m
Lens:	Canon EF 50mm f/1.8 STM	Projection Type:	Cylindrical	Tripod Height:	1.5m	View Direction	S
Equipment:	Manfrotto MA 454 Micro Positioning Plate	Enlargement Factor:	1.5	Viewpoint Ground Height:	89.9m AOD	(Centre of View):	S
	Manfrotto SBH-100 Ball Head	Horizontal FOV:	56.5°	Viewpoint Grid Reference:	567389E, 169920N	GPS Accuracy:	5m



**LOWER THAMES CROSSING**  
 5th Floor Beaufort House  
 15 St Botolph Street  
 London EC3A 7DT

Project	LOWER THAMES CROSSING
Drawing title	Figure 7.19 Photomontage - Viewpoint S-17 Summer Year 15 Sheet 3 of 4

Drawn	BB	Date - 05/08/2022	Status	Revision
Checked	HP	Date - 05/08/2022	S8	P01
Approved	SK	Date - 05/08/2022	Application Document No. TR010032/APP/6.2	
Drawing number		HE540039-CJV-ELS-SZP_ZZ000000_Z-DR-LV-00299		



Rev	Status	Rev. Date	Purpose of revision	Drawn	Chck'd	Apprv'd
P01	S8	05/08/2022	First Issued	BB	HP	SK

For location see Figure 7.16 - Visual Effects Drawing with Representative Viewpoint and Photomontage Locations		<b>Summer Viewpoint:</b>	S-17				
		Date and Time:	29/05/2019 16:44				
Camera:	Canon EOS 6D MkII	Visualisation Type:	Type 3	FL, Max Aperture:	50mm, 1.75	Distance to Order Limits:	0m
Lens:	Canon EF 50mm f/1.8 STM	Projection Type:	Cylindrical	Tripod Height:	1.5m	View Direction	S
Equipment:	Manfrotto MA 454 Micro Positioning Plate	Enlargement Factor:	1.5	Viewpoint Ground Height:	89.9m AOD	(Centre of View):	S
	Manfrotto SBH-100 Ball Head	Horizontal FOV:	56.5°	Viewpoint Grid Reference:	567389E, 169920N	GPS Accuracy:	5m

Client



**LOWER THAMES CROSSING**  
 5th Floor Beaufort House  
 15 St Botolph Street  
 London EC3A 7DT

Project	LOWER THAMES CROSSING
Drawing title	Figure 7.19 Baseline Photography - Viewpoint S-17 Summer Year 15 Sheet 4 of 4

Drawn	BB	Date - 05/08/2022	Status	S8	Revision	P01
Checked	HP	Date - 05/08/2022				
Approved	SK	Date - 05/08/2022	Application Document No. TR010032/APP/6.2			
Drawing number		HE540039-CJV-ELS-SZP_ZZ000000_Z-DR-LV-00300A				



For location see Figure 7.16 - Visual Effects Drawing with Representative Viewpoint and Photomontage Locations

**Summer Viewpoint:** S-17  
Date and Time: 29/05/2019 16:44

Camera: Canon EOS 6D MkII  
Lens: Canon EF 50mm f/1.8 STM  
Equipment: Manfrotto MA 454 Micro Positioning Plate  
Manfrotto SBH-100 Ball Head

Visualisation Type: Type 3  
Projection Type: Cylindrical  
Enlargement Factor: 1.5  
Horizontal FOV: 56.5°

FL, Max Aperture: 50mm, 1.75  
Tripod Height: 1.5m  
Viewpoint Ground Height: 89.9m AOD  
Viewpoint Grid Reference: 567389E, 169920N

Distance to Order Limits: 0m  
View Direction (Centre of View): S  
GPS Accuracy: 5m

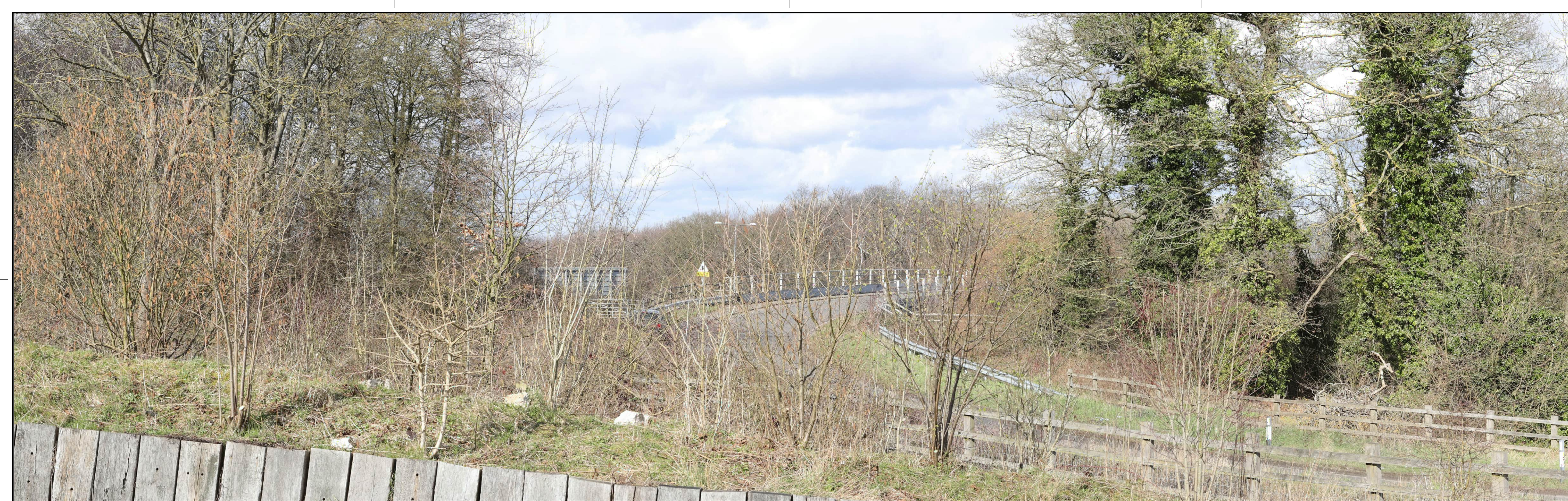


**LOWER THAMES CROSSING**  
5th Floor Beaufort House  
15 St Botolph Street  
London EC3A 7DT

Project: LOWER THAMES CROSSING  
Drawing title: Figure 7.19  
Photomontage - Viewpoint S-17  
Summer Year 15  
Sheet 4 of 4

Drawn	BB	Date - 05/08/2022	Status	Revision
Checked	HP	Date - 05/08/2022	S8	P01
Approved	SK	Date - 05/08/2022	Application Document No. TR010032/APP/6.2	
Drawing number		HE540039-CJV-ELS-SZP_ZZ000000_Z-DR-LV-00300		





For location see Figure 7.16 - Visual Effects Drawing with Representative Viewpoint and Photomontage Locations

**Winter Viewpoint:** S-18  
**Date and Time:** 07/03/2019 12:20

**Camera:** Canon EOS 6D MkII  
**Lens:** Canon EF 50mm f/1.8 STM  
**Equipment:** Manfrotto MA 454 Micro Positioning Plate  
 Manfrotto SBH-100 Ball Head

**Visualisation Type:** Type 3  
**Projection Type:** Cylindrical  
**Enlargement Factor:** 1.5  
**Horizontal FOV:** 56.5°

**FL, Max Aperture:** 50mm, 1.75  
**Tripod Height:** 1.5m  
**Viewpoint Ground Height:** 99.8m AOD  
**Viewpoint Grid Reference:** 567405E, 169718N

**Distance to Order Limits:** 0m  
**View Direction (Centre of View):** NW  
**GPS Accuracy:** 5m



**LOWER THAMES CROSSING**  
 5th Floor Beaufort House  
 15 St Botolph Street  
 London EC3A 7DT

**Project** LOWER THAMES CROSSING  
**Drawing title** Figure 7.19  
 Baseline Photography - Viewpoint S-18  
 Winter Year 1  
 Sheet 1 of 2

Drawn	BB	Date - 05/08/2022	Status	Revision
Checked	HP	Date - 05/08/2022	S8	P01
Approved	SK	Date - 05/08/2022	Application Document No. TR010032/APP/6.2	
Drawing number		HE540039-CJV-ELS-SZP_ZZ000000_Z-DR-LV-00301A		



Rev	Status	Rev. Date	Purpose of revision	Drawn	Chck'd	Apprv'd
P01	S8	05/08/2022	First Issued	BB	HP	SK

For location see Figure 7.16 - Visual Effects Drawing with Representative Viewpoint and Photomontage Locations

Camera: Canon EOS 6D MkII  
 Lens: Canon EF 50mm f/1.8 STM  
 Equipment: Manfrotto MA 454 Micro Positioning Plate  
 Manfrotto SBH-100 Ball Head

**Winter Viewpoint:** S-18  
 Date and Time: 07/03/2019 12:20

Visualisation Type: Type 3  
 Projection Type: Cylindrical  
 Enlargement Factor: 1.5  
 Horizontal FOV: 56.5°

FL, Max Aperture: 50mm, 1.75  
 Tripod Height: 1.5m  
 Viewpoint Ground Height: 99.8m AOD  
 Viewpoint Grid Reference: 567405E, 169718N

Distance to Order Limits: 0m  
 View Direction (Centre of View): NW  
 GPS Accuracy: 5m



**LOWER THAMES CROSSING**  
 5th Floor Beaufort House  
 15 St Botolph Street  
 London EC3A 7DT

Project: LOWER THAMES CROSSING  
 Drawing title: Figure 7.19  
 Photomontage - Viewpoint S-18  
 Winter Year 1  
 Sheet 1 of 2

Drawn	BB	Date - 05/08/2022	Status	Revision
Checked	HP	Date - 05/08/2022	S8	P01
Approved	SK	Date - 05/08/2022	Application Document No. TR010032/APP/6.2	
Drawing number		HE540039-CJV-ELS-SZP_ZZ000000_Z-DR-LV-00301		



Rev	Status	Rev. Date	Purpose of revision	Drawn	Chck'd	Apprv'd
P01	S8	05/08/2022	First Issued	BB	HP	SK

For location see Figure 7.16 - Visual Effects Drawing with Representative Viewpoint and Photomontage Locations

Camera: Canon EOS 6D MkII  
 Lens: Canon EF 50mm f/1.8 STM  
 Equipment: Manfrotto MA 454 Micro Positioning Plate  
 Manfrotto SBH-100 Ball Head

**Summer Viewpoint:** S-18  
 Date and Time: 29/05/2019 16:21

Visualisation Type: Type 3  
 Projection Type: Cylindrical  
 Enlargement Factor: 1.5  
 Horizontal FOV: 56.5°

FL, Max Aperture: 50mm, 1.75  
 Tripod Height: 1.5m  
 Viewpoint Ground Height: 99.8m AOD  
 Viewpoint Grid Reference: 567405E, 169718N

Distance to Order Limits: 0m  
 View Direction (Centre of View): NW  
 GPS Accuracy: 5m



**LOWER THAMES CROSSING**  
 5th Floor Beaufort House  
 15 St Botolph Street  
 London EC3A 7DT

Project: LOWER THAMES CROSSING  
 Drawing title: Figure 7.19  
 Baseline Photography - Viewpoint S-18  
 Summer Year 15  
 Sheet 2 of 2

Drawn	BB	Date - 05/08/2022	Status	S8	Revision	P01
Checked	HP	Date - 05/08/2022	Application Document No.	TR010032/APP/6.2		
Approved	SK	Date - 05/08/2022	Drawing number	HE540039-CJV-ELS-SZP_ZZ000000_Z-DR-LV-00302A		



P01	S8	05/08/2022	First Issued	BB	HP	SK
Rev	Status	Rev. Date	Purpose of revision	Drawn	Chck'd	Apprv'd

For location see Figure 7.16 - Visual Effects Drawing with Representative Viewpoint and Photomontage Locations

Camera: Canon EOS 6D MkII  
 Lens: Canon EF 50mm f/1.8 STM  
 Equipment: Manfrotto MA 454 Micro Positioning Plate  
 Manfrotto SBH-100 Ball Head

**Summer Viewpoint:** S-18  
 Date and Time: 29/05/2019 16:21

Visualisation Type: Type 3  
 Projection Type: Cylindrical  
 Enlargement Factor: 1.5  
 Horizontal FOV: 56.5°

FL, Max Aperture: 50mm, 1.75  
 Tripod Height: 1.5m  
 Viewpoint Ground Height: 99.8m AOD  
 Viewpoint Grid Reference: 567405E, 169718N

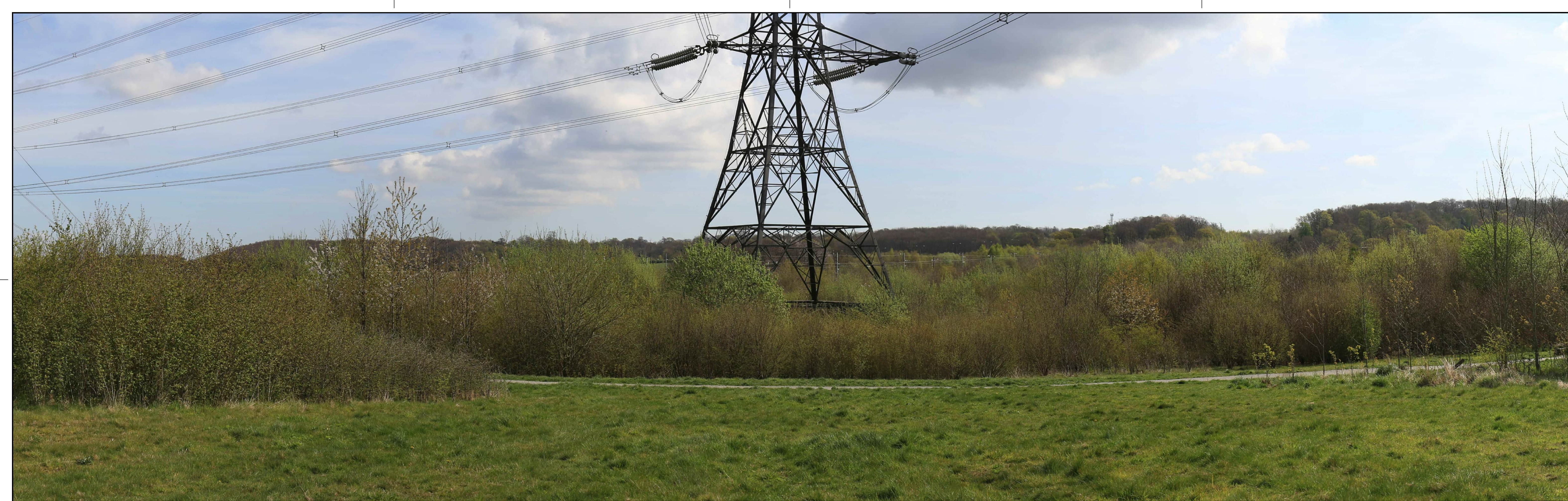
Distance to Order Limits: 0m  
 View Direction (Centre of View): NW  
 GPS Accuracy: 5m



**LOWER THAMES CROSSING**  
 5th Floor Beaufort House  
 15 St Botolph Street  
 London EC3A 7DT

Project: LOWER THAMES CROSSING  
 Drawing title: Figure 7.19  
 Photomontage - Viewpoint S-18  
 Summer Year 15  
 Sheet 2 of 2

Drawn	BB	Date - 05/08/2022	Status	Revision
Checked	HP	Date - 05/08/2022	S8	P01
Approved	SK	Date - 05/08/2022	Application Document No. TR010032/APP/6.2	
Drawing number HE540039-CJV-ELS-SZP_ZZ000000_Z-DR-LV-00302				



Rev	Status	Rev. Date	Purpose of revision	Drawn	Chck'd	Apprv'd
P01	S8	05/08/2022	First Issued	BB	HP	SK

For location see Figure 7.16 - Visual Effects Drawing with Representative Viewpoint and Photomontage Locations

Camera: Canon EOS 6D MkII  
 Lens: Canon EF 50mm f/1.8 STM  
 Equipment: Manfrotto MA 454 Micro Positioning Plate  
 Manfrotto SBH-100 Ball Head

**Winter Viewpoint:**  
 Date and Time: S-20a  
 14/04/2022 09:53

Visualisation Type: Type 3  
 Projection Type: Cylindrical  
 Enlargement Factor: 1.5  
 Horizontal FOV: 56.5°

FL, Max Aperture: 50mm, 1.75  
 Tripod Height: 1.5m  
 Viewpoint Ground Height: 85.3m AOD  
 Viewpoint Grid Reference: 566264E, 169859N

Distance to Order Limits: 0m  
 View Direction (Centre of View): NE  
 GPS Accuracy: 5m



**LOWER THAMES CROSSING**  
 5th Floor Beaufort House  
 15 St Botolph Street  
 London EC3A 7DT

Project: LOWER THAMES CROSSING  
 Drawing title: Figure 7.19  
 Baseline Photography - Viewpoint S-20a  
 Winter Year 1  
 Sheet 1 of 2

Drawn	BB	Date - 05/08/2022	Status	S8	Revision	P01
Checked	HP	Date - 05/08/2022	Application Document No. TR010032/APP/6.2			
Approved	SK	Date - 05/08/2022	Drawing number			
HE540039-CJV-ELS-SZP_ZZ000000_Z-DR-LV-00303A						



Rev	Status	Rev. Date	Purpose of revision	Drawn	Chck'd	Apprv'd
P01	S8	05/08/2022	First Issued	BB	HP	SK

For location see Figure 7.16 - Visual Effects Drawing with Representative Viewpoint and Photomontage Locations

Camera: Canon EOS 6D MkII  
 Lens: Canon EF 50mm f/1.8 STM  
 Equipment: Manfrotto MA 454 Micro Positioning Plate  
 Manfrotto SBH-100 Ball Head

**Winter Viewpoint:**  
 Date and Time: S-20a  
 14/04/2022 09:53

Visualisation Type: Type 3  
 Projection Type: Cylindrical  
 Enlargement Factor: 1.5  
 Horizontal FOV: 56.5°

FL, Max Aperture: 50mm, 1.75  
 Tripod Height: 1.5m  
 Viewpoint Ground Height: 85.3m AOD  
 Viewpoint Grid Reference: 566264E, 169859N

Distance to Order Limits: 0m  
 View Direction (Centre of View): NE  
 GPS Accuracy: 5m



**LOWER THAMES CROSSING**  
 5th Floor Beaufort House  
 15 St Botolph Street  
 London EC3A 7DT

Project: LOWER THAMES CROSSING  
 Drawing title: Figure 7.19  
 Photomontage - Viewpoint S-20a  
 Winter Year 1  
 Sheet 1 of 2

Drawn	BB	Date - 05/08/2022	Status	Revision
Checked	HP	Date - 05/08/2022	S8	P01
Approved	SK	Date - 05/08/2022	Application Document No. TR010032/APP/6.2	
Drawing number HE540039-CJV-ELS-SZP_ZZ000000_Z-DR-LV-00303				



P01	S8	05/08/2022	First Issued	BB	HP	SK
Rev	Status	Rev. Date	Purpose of revision	Drawn	Chck'd	Apprv'd

For location see Figure 7.16 - Visual Effects Drawing with Representative Viewpoint and Photomontage Locations		<b>Summer Viewpoint:</b>	S-20a				
		Date and Time:	13/06/2022 08:31				
Camera:	Canon EOS 6D MkII	Visualisation Type:	Type 3	FL, Max Aperture:	50mm, 1.75	Distance to Order Limits:	0m
Lens:	Canon EF 50mm f/1.8 STM	Projection Type:	Cylindrical	Tripod Height:	1.5m	View Direction	NE
Equipment:	Manfrotto MA 454 Micro Positioning Plate	Enlargement Factor:	1.5	Viewpoint Ground Height:	85.3m AOD	(Centre of View):	NE
	Manfrotto SBH-100 Ball Head	Horizontal FOV:	56.5°	Viewpoint Grid Reference:	566264E, 169859N	GPS Accuracy:	5m

Client



**LOWER THAMES CROSSING**  
 5th Floor Beaufort House  
 15 St Botolph Street  
 London EC3A 7DT

Project LOWER THAMES CROSSING  
 Drawing title Figure 7.19  
 Baseline Photography - Viewpoint S-20a  
 Summer Year 15  
 Sheet 2 of 2

Drawn	BB	Date - 05/08/2022	Status	Revision
Checked	HP	Date - 05/08/2022	S8	P01
Approved	SK	Date - 05/08/2022	Application Document No. TR010032/APP/6.2	
Drawing number		HE540039-CJV-ELS-SZP_ZZ000000_Z-DR-LV-00304A		



P01	S8	05/08/2022	First Issued	BB	HP	SK
Rev	Status	Rev. Date	Purpose of revision	Drawn	Chck'd	Apprv'd

For location see Figure 7.16 - Visual Effects Drawing with Representative Viewpoint and Photomontage Locations

Camera: Canon EOS 6D MkII  
 Lens: Canon EF 50mm f/1.8 STM  
 Equipment: Manfrotto MA 454 Micro Positioning Plate  
 Manfrotto SBH-100 Ball Head

**Summer Viewpoint:**  
 Date and Time: S-20a  
 13/06/2022 08:31

Visualisation Type: Type 3  
 Projection Type: Cylindrical  
 Enlargement Factor: 1.5  
 Horizontal FOV: 56.5°

FL, Max Aperture: 50mm, 1.75  
 Tripod Height: 1.5m  
 Viewpoint Ground Height: 85.3m AOD  
 Viewpoint Grid Reference: 566264E, 169859N

Distance to Order Limits: 0m  
 View Direction (Centre of View): NE  
 GPS Accuracy: 5m



**LOWER THAMES CROSSING**  
 5th Floor Beaufort House  
 15 St Botolph Street  
 London EC3A 7DT

Project LOWER THAMES CROSSING  
 Drawing title Figure 7.19  
 Photomontage - Viewpoint S-20a  
 Summer Year 15  
 Sheet 2 of 2

Drawn	BB	Date - 05/08/2022	Status	Revision
Checked	HP	Date - 05/08/2022	S8	P01
Approved	SK	Date - 05/08/2022	Application Document No. TR010032/APP/6.2	
Drawing number <b>HE540039-CJV-ELS-SZP_ZZ000000_Z-DR-LV-00304</b>				





P01	S8	05/08/2022	First Issued	BB	HP	SK
Rev	Status	Rev. Date	Purpose of revision	Drawn	Chck'd	Apprv'd

For location see Figure 7.16 - Visual Effects Drawing with Representative Viewpoint and Photomontage Locations

Camera: Canon EOS 6D MkII  
 Lens: Canon EF 50mm f/1.8 STM  
 Equipment: Manfrotto MA 454 Micro Positioning Plate  
 Manfrotto SBH-100 Ball Head

**Winter Viewpoint:**  
 Date and Time: S-22  
 07/03/2019 13:30

Visualisation Type: Type 3  
 Projection Type: Cylindrical  
 Enlargement Factor: 1.5  
 Horizontal FOV: 56.5°

FL, Max Aperture: 50mm, 1.75  
 Tripod Height: 1.65m  
 Viewpoint Ground Height: 82.4m AOD  
 Viewpoint Grid Reference: 565953E, 170432N

Distance to Order Limits: 0m  
 View Direction (Centre of View): ESE  
 GPS Accuracy: 5m



**LOWER THAMES CROSSING**  
 5th Floor Beaufort House  
 15 St Botolph Street  
 London EC3A 7DT

Project: LOWER THAMES CROSSING  
 Drawing title: Figure 7.19  
 Baseline Photography - Viewpoint S-22  
 Winter Year 1  
 Sheet 1 of 2

Drawn	BB	Date - 05/08/2022	Status	Revision
Checked	HP	Date - 05/08/2022	S8	P01
Approved	SK	Date - 05/08/2022	Application Document No. TR010032/APP/6.2	
Drawing number HE540039-CJV-ELS-SZP_ZZ000000_Z-DR-LV-00305A				



P01	S8	05/08/2022	First Issued	BB	HP	SK
Rev	Status	Rev. Date	Purpose of revision	Drawn	Chck'd	Apprv'd

For location see Figure 7.16 - Visual Effects Drawing with Representative Viewpoint and Photomontage Locations		<b>Winter Viewpoint:</b> Date and Time:	S-22 07/03/2019 13:30	Visualisation Type:	Type 3	FL, Max Aperture:	50mm, 1.75	Distance to Order Limits:	0m
Camera:	Canon EOS 6D MkII	Projection Type:	Cylindrical	Tripod Height:	1.65m	Viewpoint Ground Height:	82.4m AOD	View Direction (Centre of View):	ESE
Lens:	Canon EF 50mm f/1.8 STM	Enlargement Factor:	1.5	Viewpoint Grid Reference:	565953E, 170432N	View Direction (Centre of View):	ESE	GPS Accuracy:	5m
Equipment:	Manfrotto MA 454 Micro Positioning Plate Manfrotto SBH-100 Ball Head	Horizontal FOV:	56.5°						

Client



**LOWER THAMES CROSSING**  
5th Floor Beaufort House  
15 St Botolph Street  
London EC3A 7DT

Project	LOWER THAMES CROSSING
Drawing title	Figure 7.19 Photomontage - Viewpoint S-22 Winter Year 1 Sheet 1 of 2

Drawn	BB	Date - 05/08/2022	Status	Revision
Checked	HP	Date - 05/08/2022	S8	P01
Approved	SK	Date - 05/08/2022	Application Document No. TR010032/APP/6.2	
Drawing number		HE540039-CJV-ELS-SZP_ZZ000000_Z-DR-LV-00305		



For location see Figure 7.16 - Visual Effects Drawing with Representative Viewpoint and Photomontage Locations

**Summer Viewpoint:** S-22  
Date and Time: 29/05/2019 15:33

Camera: Canon EOS 6D MkII  
Lens: Canon EF 50mm f/1.8 STM  
Equipment: Manfrotto MA 454 Micro Positioning Plate  
Manfrotto SBH-100 Ball Head

Visualisation Type: Type 3  
Projection Type: Cylindrical  
Enlargement Factor: 1.5  
Horizontal FOV: 56.5°

FL, Max Aperture: 50mm, 1.75  
Tripod Height: 1.65m  
Viewpoint Ground Height: 82.4m AOD  
Viewpoint Grid Reference: 565953E, 170432N

Distance to Order Limits: 0m  
View Direction (Centre of View): ESE  
GPS Accuracy: 5m



**LOWER THAMES CROSSING**  
5th Floor Beaufort House  
15 St Botolph Street  
London EC3A 7DT

Project: LOWER THAMES CROSSING  
Drawing title: Figure 7.19  
Baseline Photography - Viewpoint S-22  
Summer Year 15  
Sheet 2 of 2

Drawn	BB	Date - 05/08/2022	Status	Revision
Checked	HP	Date - 05/08/2022	S8	P01
Approved	SK	Date - 05/08/2022	Application Document No. TR010032/APP/6.2	
Drawing number HE540039-CJV-ELS-SZP_ZZ000000_Z-DR-LV-00306A				

P01	S8	05/08/2022	First Issued	BB	HP	SK
Rev	Status	Rev. Date	Purpose of revision	Drawn	Chck'd	Apprv'd



P01	S8	05/08/2022	First Issued	BB	HP	SK
Rev	Status	Rev. Date	Purpose of revision	Drawn	Chck'd	Apprv'd

For location see Figure 7.16 - Visual Effects Drawing with Representative Viewpoint and Photomontage Locations		<b>Summer Viewpoint:</b>	S-22				
		Date and Time:	29/05/2019 15:33				
Camera:	Canon EOS 6D MkII	Visualisation Type:	Type 3	FL, Max Aperture:	50mm, 1.75	Distance to Order Limits:	0m
Lens:	Canon EF 50mm f/1.8 STM	Projection Type:	Cylindrical	Tripod Height:	1.65m	View Direction	ESE
Equipment:	Manfrotto MA 454 Micro Positioning Plate	Enlargement Factor:	1.5	Viewpoint Ground Height:	82.4m AOD	(Centre of View):	ESE
	Manfrotto SBH-100 Ball Head	Horizontal FOV:	56.5°	Viewpoint Grid Reference:	565953E, 170432N	GPS Accuracy:	5m

Client



**LOWER THAMES CROSSING**  
 5th Floor Beaufort House  
 15 St Botolph Street  
 London EC3A 7DT

Project	LOWER THAMES CROSSING
Drawing title	Figure 7.19 Photomontage - Viewpoint S-22 Summer Year 15 Sheet 2 of 2

Drawn	BB	Date - 05/08/2022	Status	Revision
Checked	HP	Date - 05/08/2022	S8	P01
Approved	SK	Date - 05/08/2022	Application Document No. TR010032/APP/6.2	
Drawing number		HE540039-CJV-ELS-SZP_ZZ000000_Z-DR-LV-00306		

If you need help accessing this or any other National Highways information, please call **0300 123 5000** and we will help you.

© Crown copyright 2023.

You may re-use this information (not including logos) free of charge in any format or medium, under the terms of the Open Government Licence. To view this licence:

visit [www.nationalarchives.gov.uk/doc/open-government-licence/](http://www.nationalarchives.gov.uk/doc/open-government-licence/)

write to the **Information Policy Team, The National Archives, Kew, London TW9 4DU**, or email [psi@nationalarchives.gsi.gov.uk](mailto:psi@nationalarchives.gsi.gov.uk).

Mapping (where present): © Crown copyright and database rights 2023 OS 100030649. You are permitted to use this data solely to enable you to respond to, or interact with, the organisation that provided you with the data. You are not permitted to copy, sub-licence, distribute or sell any of this data to third parties in any form.

If you have any enquiries about this publication email [info@nationalhighways.co.uk](mailto:info@nationalhighways.co.uk) or call **0300 123 5000\***.

\*Calls to 03 numbers cost no more than a national rate call to an 01 or 02 number and must count towards any inclusive minutes in the same way as 01 and 02 calls.

These rules apply to calls from any type of line including mobile, BT, other fixed line or payphone. Calls may be recorded or monitored.

Printed on paper from well-managed forests and other controlled sources when issued directly by National Highways.

Registered office Bridge House, 1 Walnut Tree Close, Guildford GU1 4LZ

National Highways Limited registered in England and Wales number 09346363